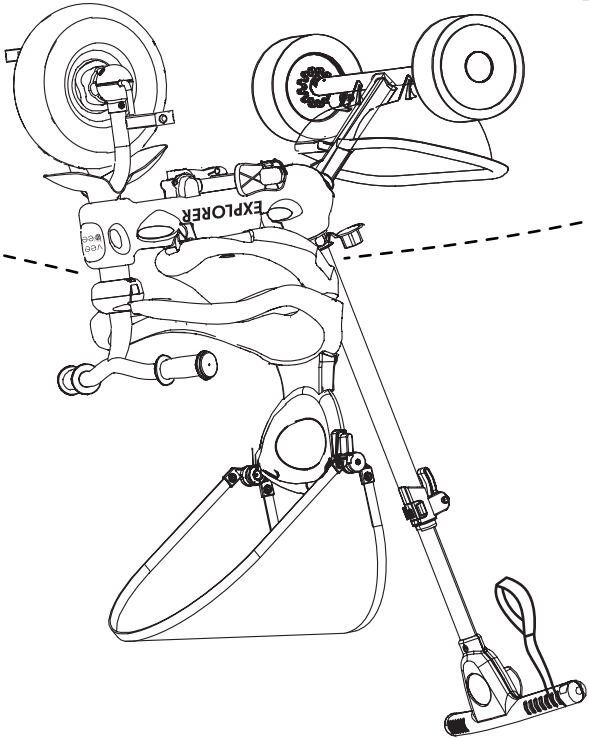


AGES
10-36
MONTHS

MAX
25
KG



USER MANUAL

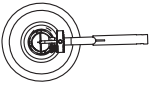



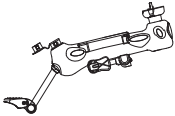

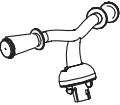

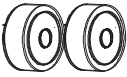


Multi-stage trike

EXPLORER

veebec.com.au

veebec

PARTS

VISUAL	PART	QTY.	VISUAL	PART	QTY.
	A. Front wheel housing	1		G. Safety enclosure	1
	B. Mud guard	1		H. Head rest	1
	C. Trike body	1		I. Canopy	1
	D. Steering column	1		J. Rear Tray	1
	E. Rear wheels	2		K. Parental push handle	1
	F. Seat	1			

This product contains screws that are pre-installed.
These may need to be removed in order to be used during installation.
Please use an appropriate screwdriver/spanner to tighten screws during assembly.

Pictures for illustration purposes only. Actual product appearance may vary.

- released frequently.
17. Any self-locking trike nuts and other self-locking elements can lose their effectiveness if may cause injury to the user or any third party.
16. This trike should be used with caution since skill is required to avoid falls or collisions which
15. Never place hands near turning wheels.
- and rear wheels.
14. Ensure that any loose clothing or straps are properly fastened and kept away from the front
12. Maximum weight for a child on this trike is 25kg.
11. Only one child should ride at a time.
10. Replace worn/broken parts immediately only with parts approved by the manufacturer.
9. Not to be used at dusk, night or at times of limited visibility and unfit weather conditions. sloped driveways.
8. Never use near motor vehicles. Not for use on streets, swimming pools, hills, steps or
7. To be used on smooth paved surfaces without any traffic only.
6. Always use the tether strap while using the parental handle.
- at all appropriate times.
5. For your child's safety, always use safety equipment such as a helmet and use the harness
4. Shoes should always be worn when riding.
3. Before riding, please check that all fasteners are correctly secured.
2. Not recommended for a child under 6 months of age.
- Parental supervision is required at all times.
1. This trike is not considered a replacement for a pram or stroller.

WARNING FOLLOW THESE INSTRUCTIONS TO AVOID SERIOUS INJURY

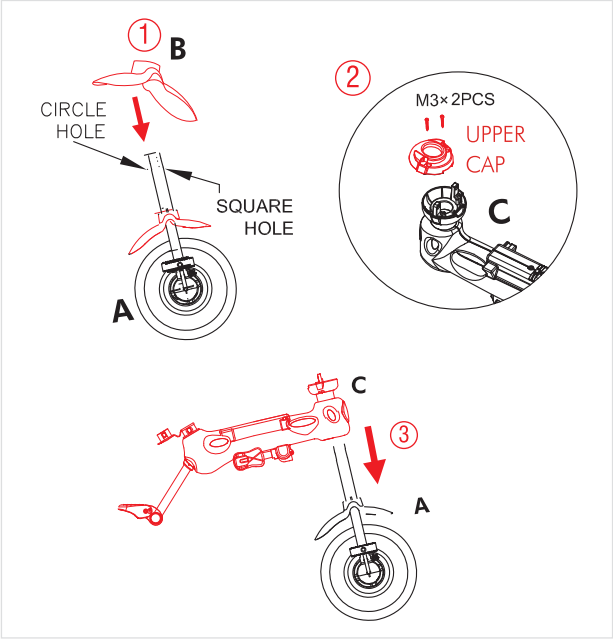
Contents of this package include small parts for assembly of this product.
These parts could be hazardous for small children.

CAUTION

Regularly check to ensure that all fasteners have not become loose. Repeated loosening and tightening of fasteners over time may decrease their effectiveness. Once assembly is complete, refrain from dismantling your Explorer in order to maximise the longevity of the product. To test the lubrication of wheel bearings, lift the product and spin each wheel individually. Any resistance to the spin should be corrected by applying a lithium or silicon based lubricant. Keep this manual and your original sales receipt in a safe place for future reference or to pass on to any subsequent users.

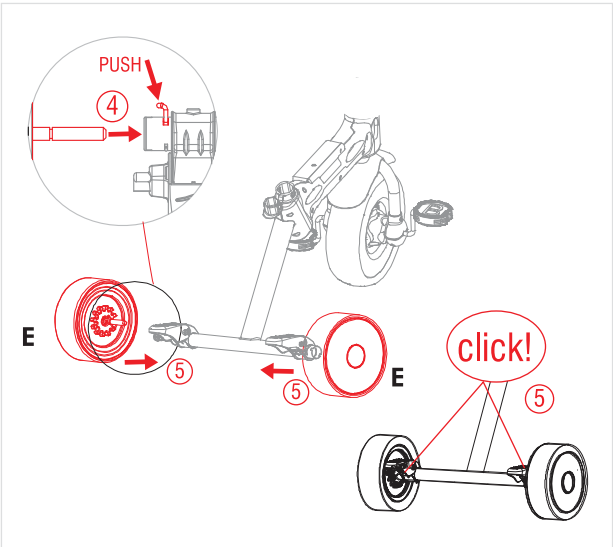
MAINTENANCE

TRIKE BODY



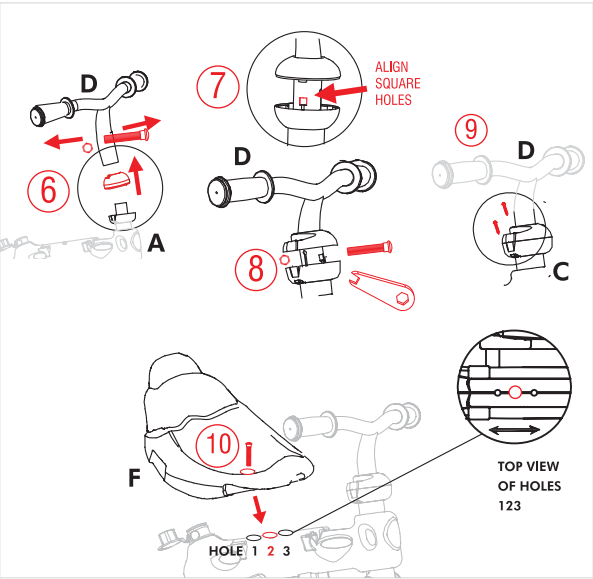
1. Place the plastic mudguard (**B**) over the front wheel assembly (**A**). Slide it down all the way till it sits in place over the front wheel fork.
2. Detach the upper cap from trike body (**C**). Keep the upper cap and both M3 screws safely as these will be used for assembly in step 9 (steering column).
3. Slide Trike body (**C**) through the front wheel housing (**A**) and push downward until it locks into place.

REAR WHEELS



4. With the embedded axle facing inward toward the rear axle of the Trike body, align each Rear wheel (**E**) with the corresponding hole at each end of the tube.
5. Insert each wheel pushing down on the wheel release tab until you hear a "click" indicating it has locked secure into place. Test.

STEERING COLUMN & SEAT ASSEMBLY



STEERING COLUMN

6. Unscrew nut and bolt on (D) and slide upper cap(which was removed in step 2) through steering column.

7. Place the steering column tube (with upper cap) over the front housing tube (A) and align the square holes.

8. Re-insert the nut and bolt through both tubes and secure.

9. Secure the upper cap to the lower cap on trike body (C) with both M3 screws.

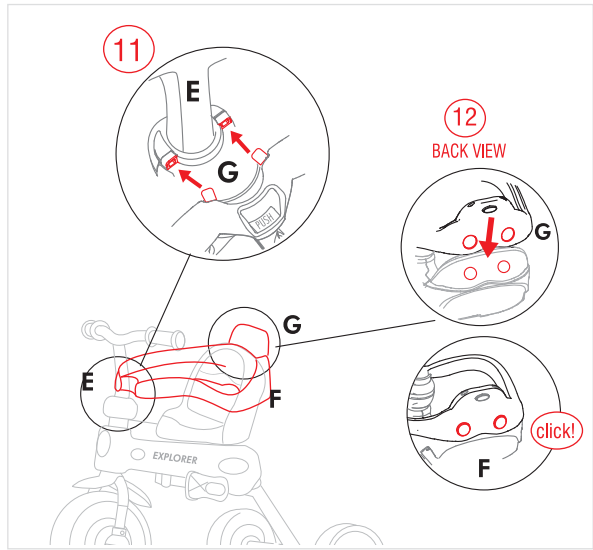
SEAT ASSEMBLY

10. Remove the pre-installed M6 screw from hole 2 on the trike body. Align seat (F) to hole 2 and secure with M6 screw.

STAGE 2 & 3 : On removing the safety enclosure, you may secure the seat to holes 1 or 3 depending on your childs size and comfort.

Test to ensure that all attachments are secure before use.

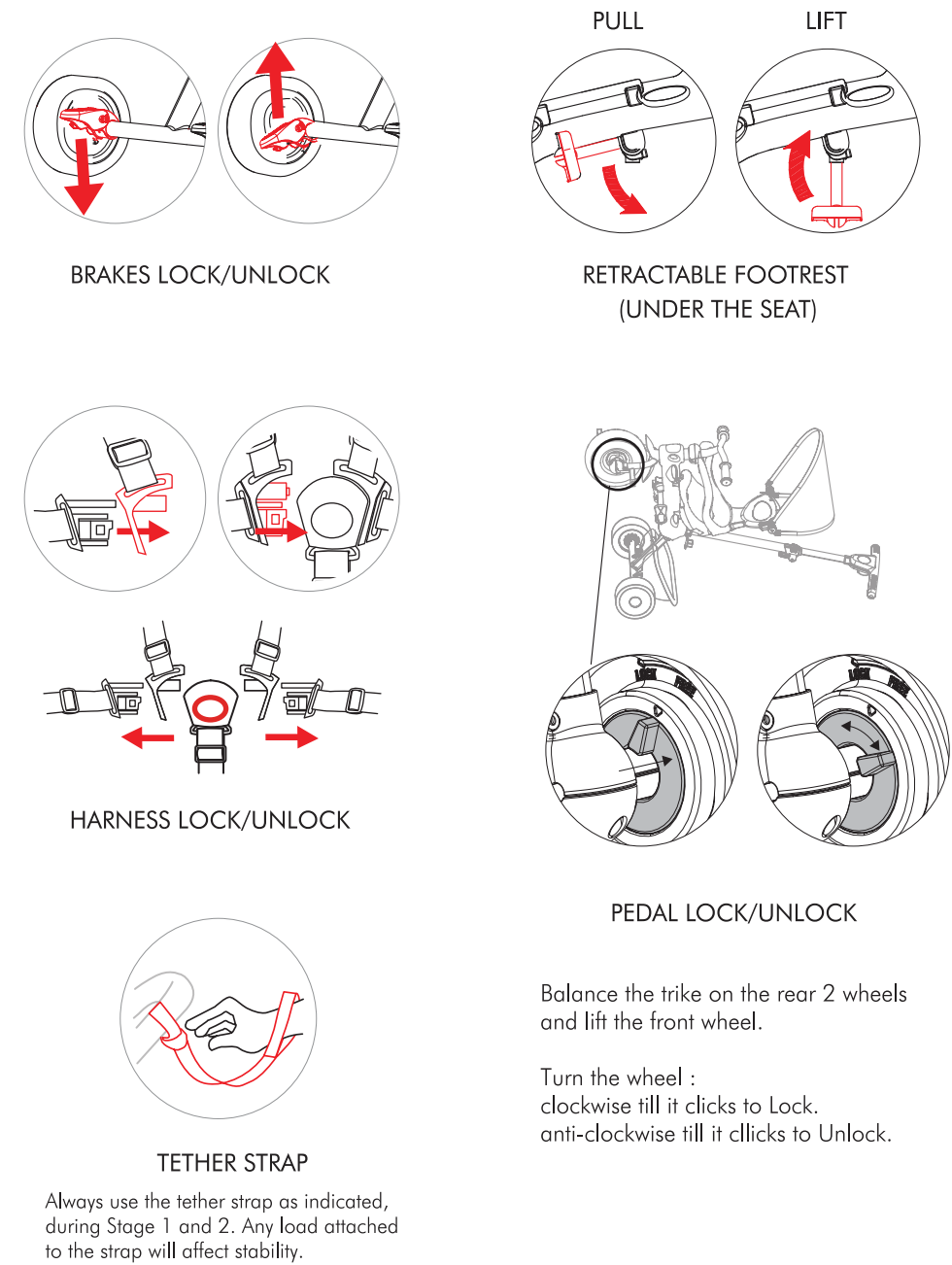
SAFETY ENCLOSURE



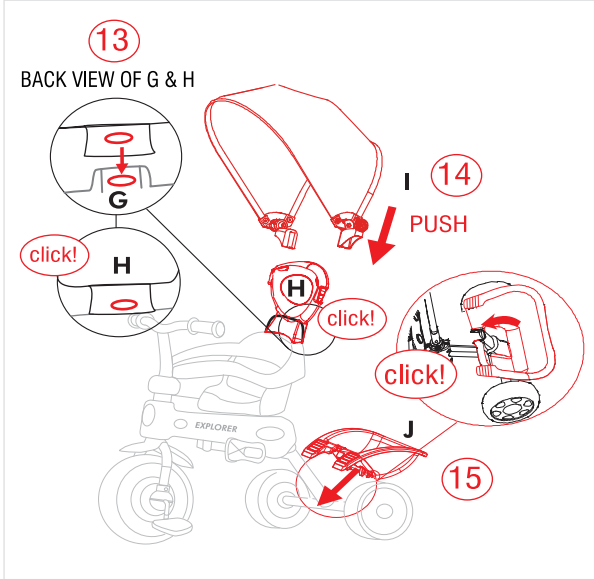
11. Insert the front tabs of the seat enclosure (G) into the corresponding slots in the steering column plastic join (E).

12. Place the rear of the safety enclosure over the rear section of the seat and push down until it locks in place. It is fully installed when the buttons fully engage with a "click" sound, in the plastic housing.

KEY FUNCTIONS



HEAD REST, CANOPY & REAR TRAY



HEAD REST

13. Insert the head rest (H) "sleeve" over the safety enclosure housing (G) at the rear of the seat. It is fully secured when the button fully engages in the hole with a "click" sound.

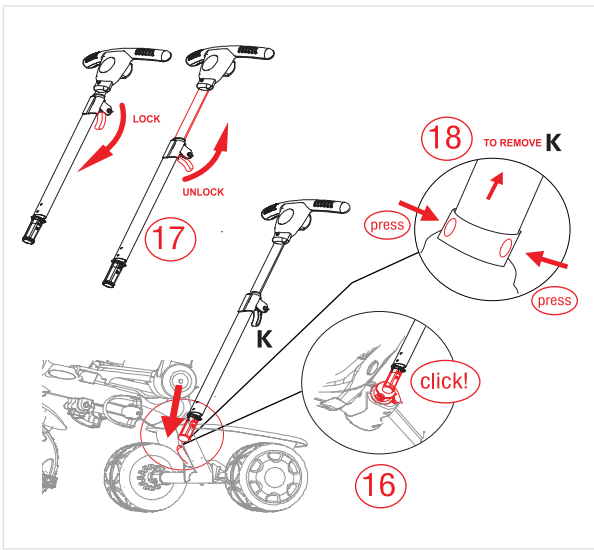
CANOPY

14. Slide the canopy housing (I) over the corresponding points at the side of the head rest (H).

REAR TRAY

15. Align the two brackets on the underside of the rear tray (J) over the rear axle tube and push down firmly to engage. Swivel the tray firmly forward till the front locks over the rear trike leg.

PARENTAL HANDLE



16. Locate and open the parental handle holder cap at the rear of the trike. Align the parent handle (K) with the tube and insert until it is fully engaged. You will hear a "click." Test.

17. You can adjust the handle height to suit by opening the lock, pulling/ pushing the tube to the desired height, and re-locking.

18. To remove, press the two buttons together on either side of the parental handle base and pull upwards.

STAGES OF USE

